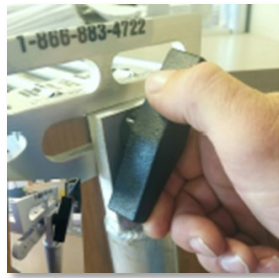




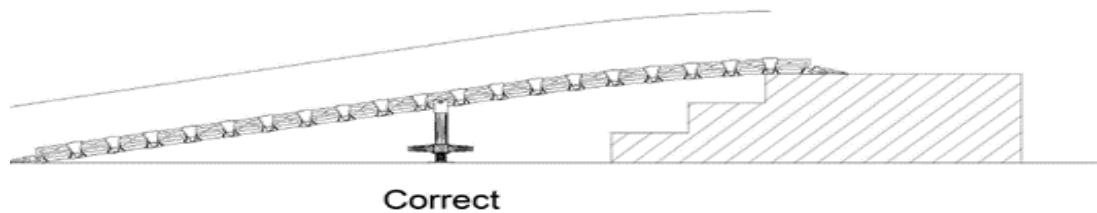
Supports Stands Come As a Pair and Are Attached To the Sides of the Ramp.

Stand Installation for Roll-A-Ramp®:

1. Position stands at approximately the center or every 6-8 ft. along the side of the ramp. Listed adjustment range of support stands are measured from the ground to the bottom edge of the ramp where the stand will be mounted. Line up mounting hole in stand top with lower slot in the desired ramp link. Position the stand in the middle of the slot on the ramp link.
2. Hold the T-Nut inside of the ramp link where the stand will be mounted. Then insert the T-Handle bolt with washer from outside through the stand top and into the T-Nut and tighten firmly.
3. Adjust the stand height by spinning the adjustment handle on the base of the support stands so the ramp is supported, but not lifting or creating a high point on the ramp.



Note: Be sure stands are installed on the same link on each side.



For a Visual Demonstration, Watch the YouTube Video: Roll-A-Ramp How to Add Support Stands:

<https://tinyurl.com/How-to-add-stands>



Support Stands (Sold in Pairs)

Required for Ramps 10 ft Or Longer

Position at Center Point, or at Every 6-8 Feet on Longer Ramps.

Adjustable & easy to install.

X Short	3.875" - 6.375"	(9.84cm - 16.19cm)
Short	9.250" - 14.125"	(23.5cm - 35.88cm)
Long	15.00" - 20.50"	(38.1cm - 52.07cm)
X Long	23.00" - 34.875"	(58.42cm - 88.58cm)