



Straight-End Handrails:
More Economical and Provide Additional Security to Any Ramp.

FEATURES & BENEFITS

- Adds a layer of security—for one side or both sides
- Inserted and removed quickly—keeps your ramp portable
- Available for any ramp length
- May be purchased with ramp or added any time in the



Loop-End Handrails:
Extends Farther on the Ramp and Provides Full End-to-End Coverage for Added Security (12" loops).

Choose Handrail Sections, or 1 Continuous Handrail

Sections: Standard on all ramps over 10'

- Multiple Shorter Handrail Sections Along the Ramp, Provides Easier Portability, Setup, and Removal of the System.
- Handrail sections are quickly removed as one piece without disassembling tube connectors.

Continuous Handrail (by request)

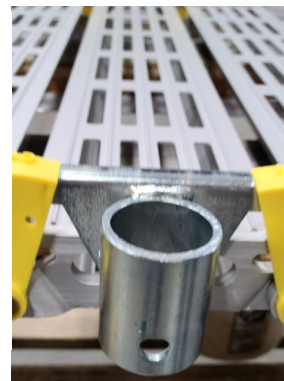
- Continuous handrails span the full length of ramp from top to bottom as one continuous length.
- Best for stationary or permanent ADA installations.

ASSEMBLY REQUIRED

- Lay the handrail parts on a flat surface and loosely assemble per instructions.
- These are easily installed using one bolt and one nut.
- Attach the steel brackets to the ramp which provide a solid and durable connection.
- Insert loosely assembled handrails into bracket on ramp.
- Tighten all set screws using tools provided.
- Brackets may remain on ramp for ease of rail insertion or be removed.



Loop End Assembly



Bracket Attached to Ramp



Handrail Inserted into Bracket